

# CLEMSON DOWNS



## **Clemson Downs Independent Living Apartment Floor Plans**

---

FEATURING NINE OPTIONS TO FIT  
YOUR LIFESTYLE



---

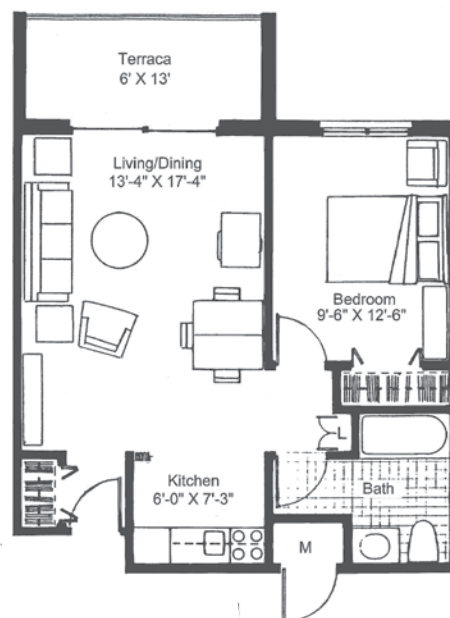
RETIRE WELL.

## THE AZALEA

### ONE BEDROOM, TYPE 8

This cozy one bedroom apartment has an open floor plan and adjoining bedroom that will meet your every need. It's perfect for hosting a friendly gathering inside or relaxing and entertaining on your outdoor terrace. The options are limitless in this well designed space.

**564 Square Feet**  
**75 Square Foot Terrace**

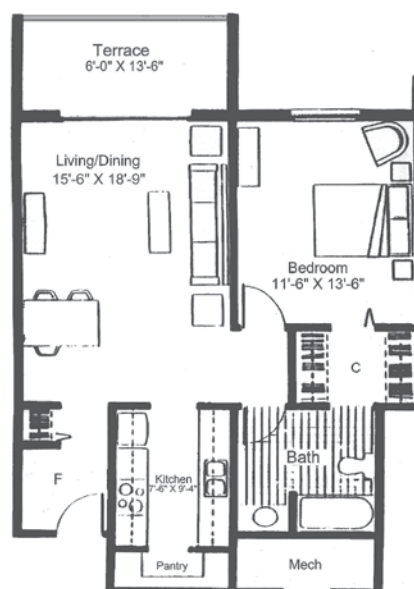


## THE DOGWOOD

### ONE BEDROOM, TYPE 1

This one bedroom apartment has everything you need to make this space your own. It is equipped with a full kitchen with pantry, a walk-through closet to the en suite bath and there is ample living area as well as a generous outdoor terrace.

**744 Square Feet**  
**80 Square Foot Terrace**

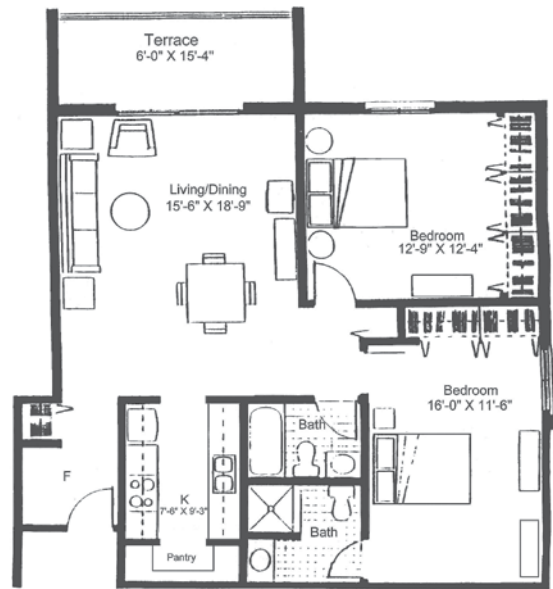


## THE CAMELIA

### TWO BEDROOM, TYPE 2

This layout features a master bedroom with an en suite bath, wall length closets as well as second bed/bath option, full kitchen and pantry. The corner living area opens up to a large outdoor terrace perfect for grilling, outdoor entertaining or container gardening.

**1024 Square Feet**  
**90 Square Foot Terrace**

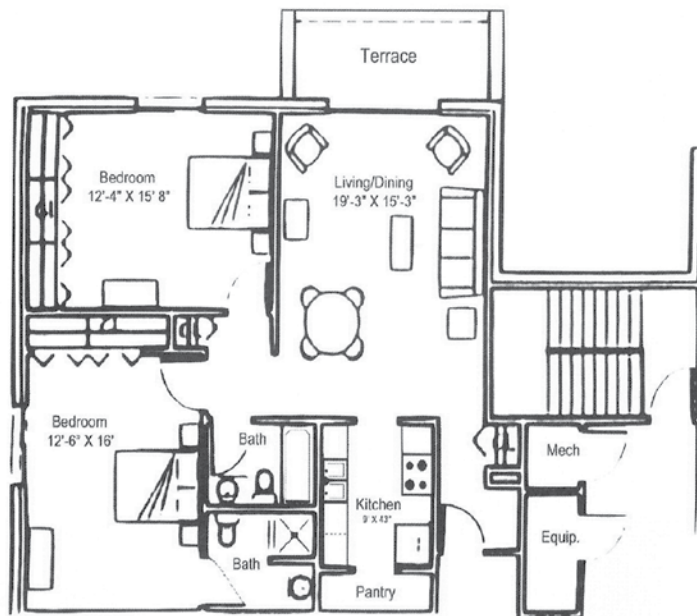


## THE LAUREL

### TWO BEDROOM, TYPE E-6

This spacious corner apartment offers a master bedroom, en suite bath as well as wall length closet. In addition to the master, there is a second bedroom with wall length closets, second bathroom, full kitchen and pantry all adjoining a living/dining room and outdoor terrace.

**1038 Square Feet**  
**75 Square Foot Terrace**



## THE LOTUS

### TWO BEDROOM, TYPE 6

This amply appointed corner apartment includes two bedrooms with wall length closets and en suite bath off the master. The full kitchen, pantry, second bathroom with additional coat or linen closet all open up into a large living space to well accommodate your furnishings. The outdoor terrace is perfect for enjoying a morning cup of coffee or kitchen gardening.

**1042 Square Feet**  
**90 Square Foot Terrace**

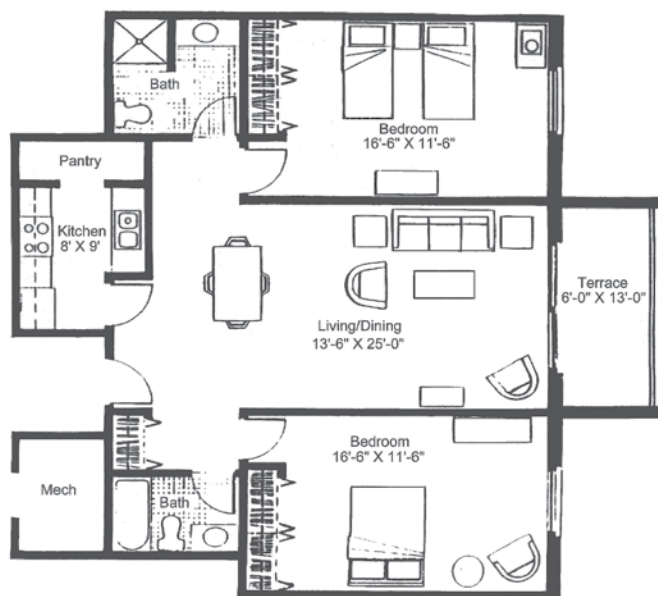


## THE GARDENIA

### TWO BEDROOM, TYPE 4

This two bedroom and two adjoining baths flank a spacious center living area ensuring this will be your home for many years to come. This apartment also features a full kitchen with a pantry and a dedicated private locking exterior storage space. All of these amenities include an outdoor terrace that will only enhance your lifestyle.

**1126 Square Feet**  
**75 Square Foot Terrace**

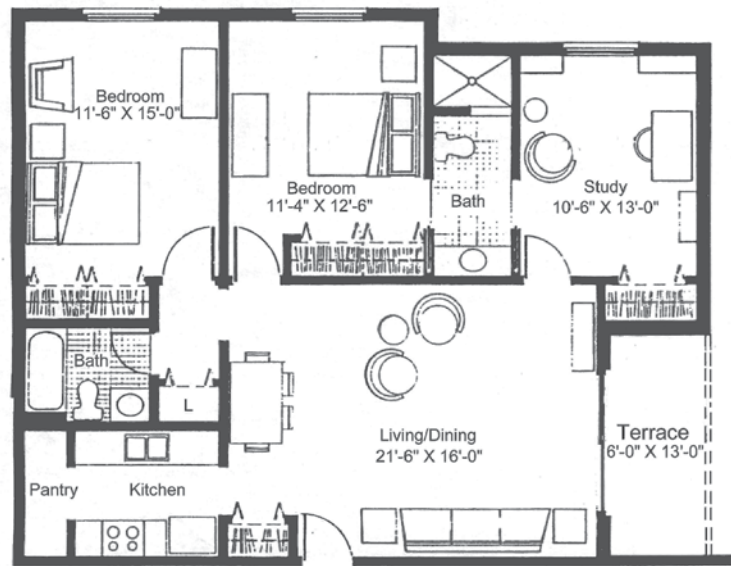




## THE MAGNOLIA TWO BEDROOM WITH STUDY, TYPE 3

This two bedroom, two bath corner apartment includes a smaller space that is connected by one of the full baths and can be an additional third bedroom for guests or a study. The bedrooms and full kitchen/pantry adjoin an open floor plan living area and outdoor terrace that ensures you will feel instantly at home.

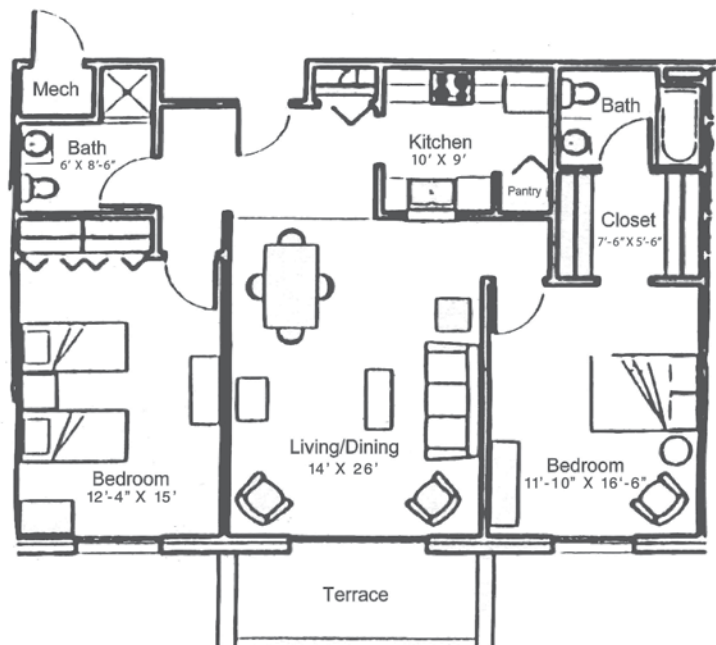
**1164 Square Feet**  
**75 Square Foot Terrace**



## THE JASMINE TWO BEDROOM, TYPE E-7

This expansive two bedroom design is known for its master bedroom's large walk-through closet connecting to the bedroom to the master bath. The apartment features a central living/dining room, full kitchen and pantry is complemented by an adjoining outdoor terrace providing ample interior and exterior living space.

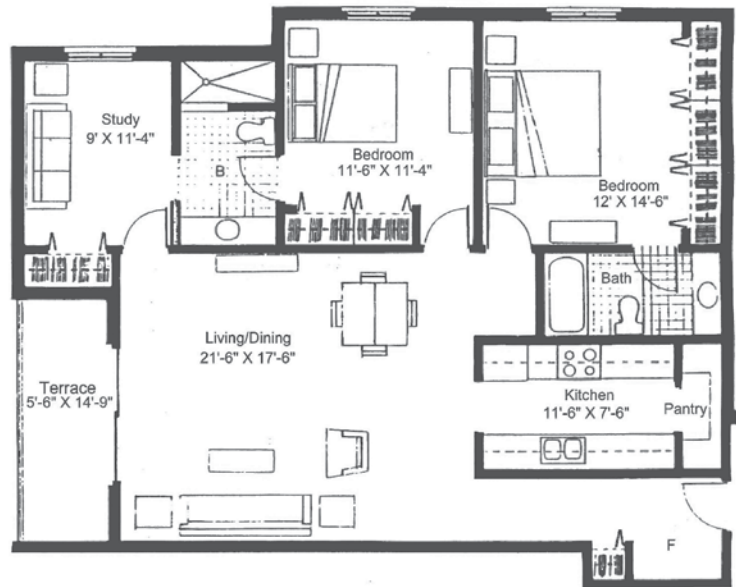
**1193 Square Feet**  
**75 Square Foot Terrace**



## THE PALMETTO TWO BEDROOM WITH STUDY, TYPE 5

This corner apartment offers our largest square footage featuring three separate living spaces. The master bedroom with its wall length closets, full en suite bath affords you the opportunity to retire in luxury. The additional bedroom is connected to the study by a second full bath. The full kitchen and pantry adjoin the open concept living space are a complement to every lifestyle.

**1270 Square Feet**  
**75 Square Foot Terrace**



**500 Downs Loop  
Clemson, South Carolina 29631  
864-654-1155**

**VISIT OUR WEBSITE FOR DRIVING DIRECTIONS**

**ClemsonDowns.com**  **@RetireWellClemson**  **864-654-1155**



**CLEMSON DOWNS**

**RETIRE WELL.**